



Haven Facade | Cool Dark Scheme



# Merino 12

Life feels easier in a home that's thoughtfully balanced. The Merino 12 brings warmth, flow, and a sense of calm to everyday living — made for those who value simplicity done well.

3 Bed 2 Bath 1 Car

109m<sup>2</sup>

## Home Features:

Designed with the space  
to shape your life, your way.  
A place to truly call home.

Open-plan kitchen, dining, and living zone

Rear living with easy outdoor connection

Single garage with internal entry

Built-in robes to all secondary bedrooms

Family bathroom with full-size bath

3 bedrooms, including a private master with  
ensuite and walk-in robe

Built-in robes to secondary bedrooms

## Merino Series

Scan below to explore  
Inclusions & Schemes.



# Merino 12

## Floor Plans

The Merino 12 is thoughtfully arranged for simplicity and flow, with three bedrooms, open-plan living to the rear, and a seamless connection to the outdoors. Every square metre is used with purpose, creating a layout that feels open, functional, and easy to live in.

**Total area** 109.9m<sup>2</sup>

House length 15.46m

House width 7.8m

Block width 9m

Block length 30m

Living 4.02 x 2.40

Dining 3.92 x 2.22

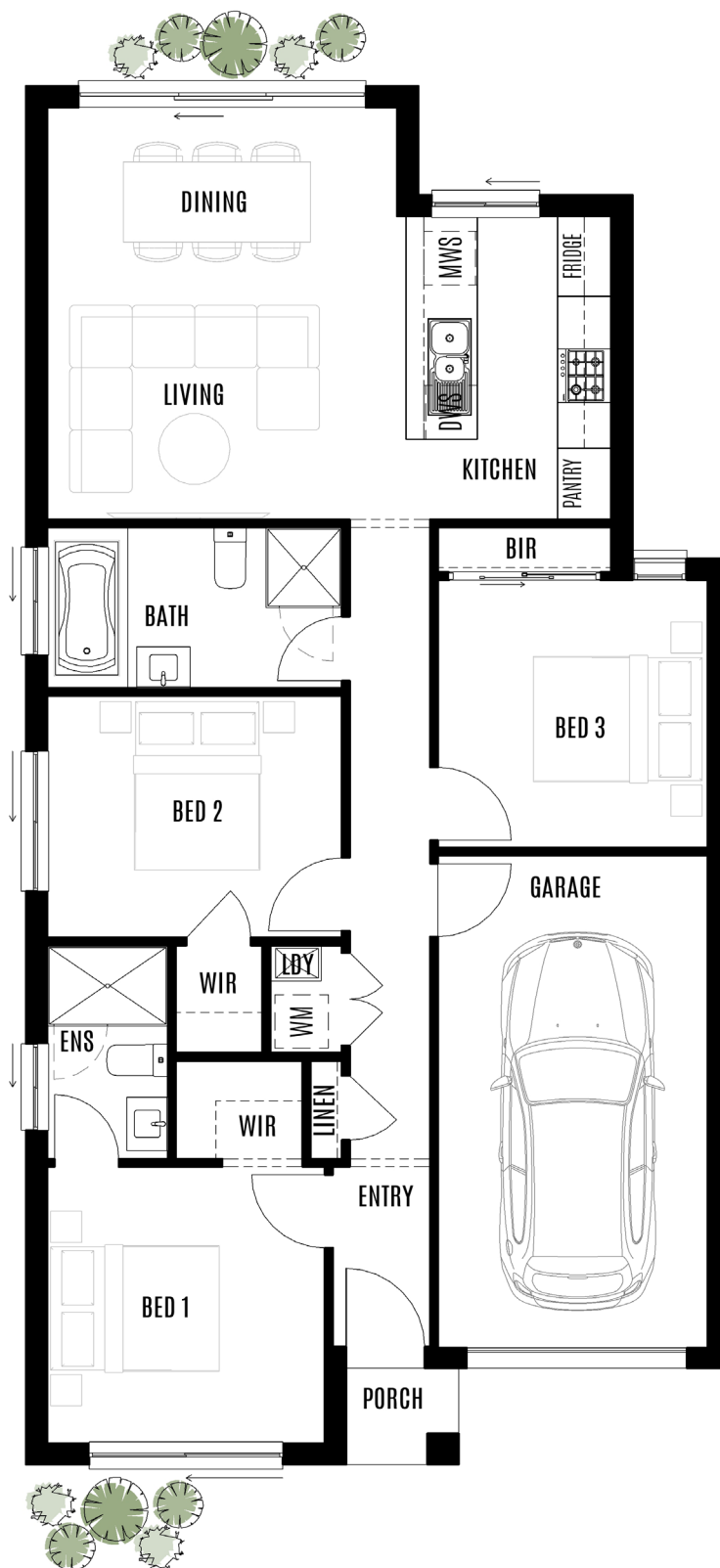
Kitchen 3.40 x 2.30

Garage 3.02 x 5.52

Bedroom 1 3.11 x 3.10

Bedroom 2 3.30 x 2.71

Bedroom 3 3.02 x 3.00



### Merino Series

Scan the QR code to explore Inclusions & Schemes.

Unlock Serenity *and* Stability

[info@marellahomes.com.au](mailto:info@marellahomes.com.au)