

Classic Facade | Edge Light Scheme



# Cypress 21

A home designed around everyday family life, with open living for time together, spaces that make daily routines easier, and a layout that feels comfortable from morning to night.

4 Bed 2 Bath 2 Car  
195m<sup>2</sup>

## Home Features:

Designed with the space  
to shape your life, your way.  
A place to truly call home.

Central kitchen with a walk-in pantry

Built-in robes to all secondary bedrooms

Single garage with convenient internal access

Separate laundry with external access

Family bathroom with a generous layout

Rear living that opens directly to the alfresco for  
easy indoor-outdoor flow

Clear sightlines to the living and dining areas

## Cypress Series

Scan below to explore  
Inclusions & Schemes.



# Cypress 21

## Floor Plans

Designed for everyday family living, this plan centres open living and dining at the rear, flowing easily to the alfresco.

Bedrooms are positioned for privacy, with the master suite set apart, while practical storage and a well-connected kitchen, laundry, and garage keep daily routines simple.

**Total area** 195m<sup>2</sup>

House length 19.9m

House width 10.6m

Block width 12.5m

Block length 28m

Living 4.80 x 3.07

Dining 4.80 x 3.00

Kitchen 2.80 x 2.40

Alfresco 4.89 x 2.52

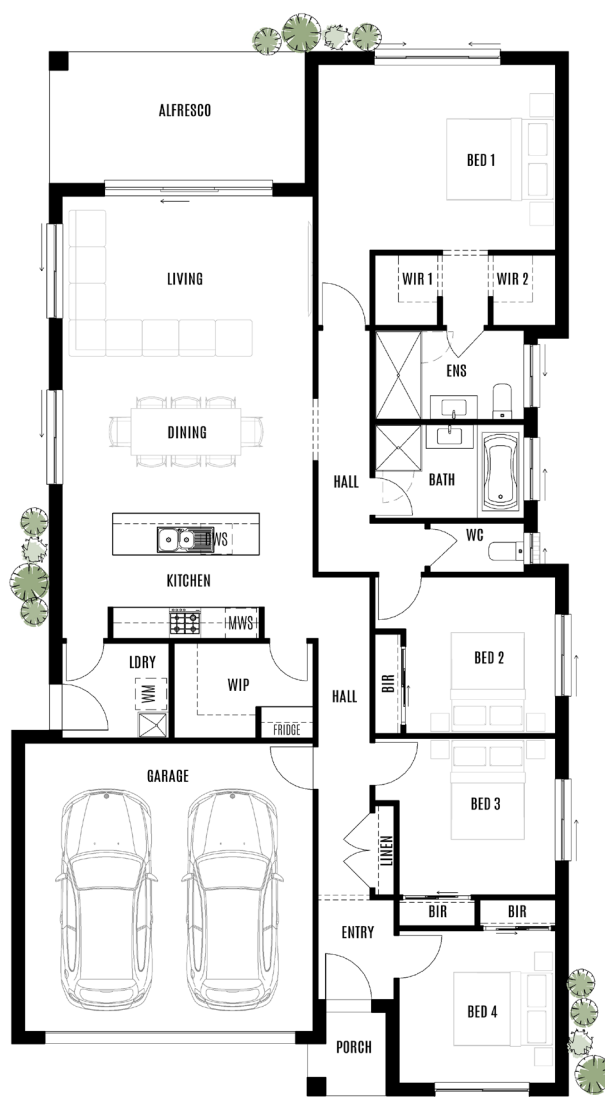
Garage 5.52 x 5.52

Bedroom 1 4.55 x 3.56

Bedroom 2 2.87 x 3.00

Bedroom 3 3.00 x 3.00

Bedroom 4 3.00 x 3.00



Cypress Series

Scan the QR code to explore Inclusions & Schemes.

Unlock Serenity and Stability

info@marellahomes.com.au